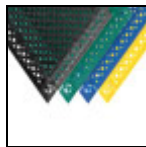
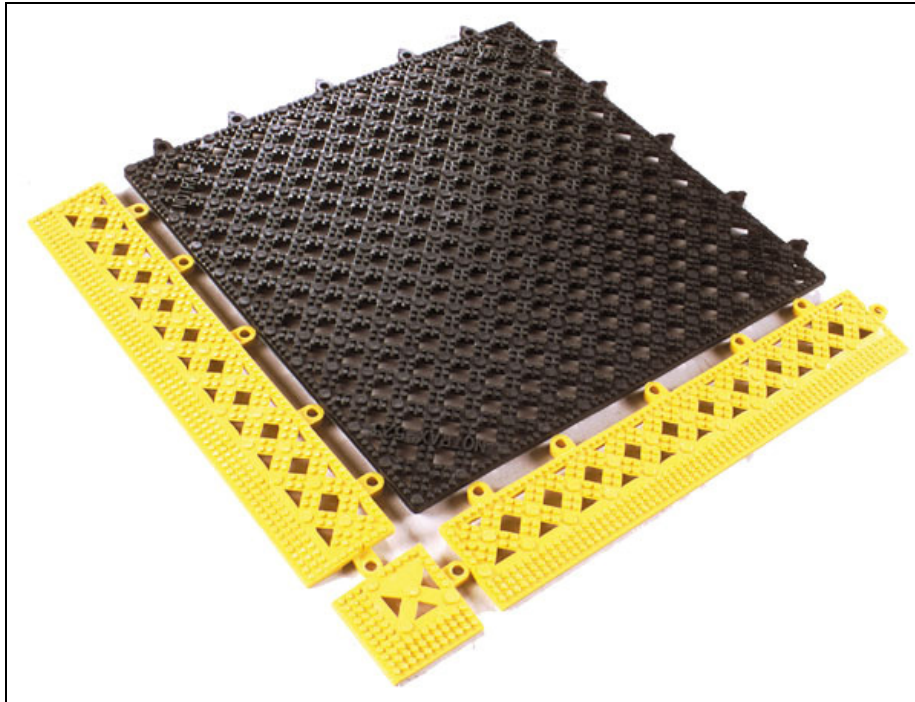


Modular Lok Tyles Interlocking Drainage Tiles



Modular Lok Tyles Interlocking Drainage Tiles allow debris and water to drain off the surface while increasing traction due to their open-grid diamond pattern. These modular tiles boast a cross-hatch design and easily snap together on-site for virtually any configuration.

- Modular Lok Tyles have corresponding beveled ramps and corners complete the installation and minimize trip hazards.
- Modular tiles can be easily reconfigured to adapt to different layouts.
- Their light-weight, modular design allows for additional use as shelf liners in food prep and bar areas.
- Thanks to the solid PVC vinyl design, these tiles are highly resistant to industrial and cleaning chemicals.
- These interlocking tiles are 12" x 12" and 9/16" thick. Ramps extend 2" from the edge of the tile.
- For use in locker rooms, shower areas, spa areas, restaurant shelving, bar areas.

Item No: PMLTILT

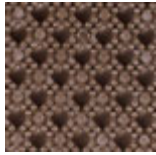
Standard Sizes (Approximate)

Size	Qty. 1-200	Qty. 201-500	Qty. 501-1000	Qty. 1001-2500
Black Tile: 12" x 12"	\$4.34	\$4.20	\$4.08	\$3.96
Color Tile: 12" x 12"	\$5.74	\$5.60	\$5.48	\$5.40
Black Ramp: 2" x 12"	\$2.36	\$2.24	\$2.16	\$2.08
Color Ramp: 2" x 12"	\$2.36	\$2.24	\$2.16	\$2.08
Black Corner: 2" x 2"	\$1.84	\$1.76	\$1.68	\$1.60
Color Corner: 2" x 2"	\$1.84	\$1.76	\$1.68	\$1.60

Standard Colors



Black



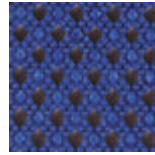
Brown



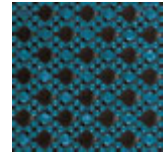
Red



Yellow



Blue



Green